

**PRESSURE SWITCHES
PRESSURE DIFFERENCE SWITCHES
VACUUM SWITCHES**
From 1.5 mbar to 600 bar



FC Air Relay Switches

INSTALLATION AND OPERATING INSTRUCTIONS

CONSTRUCTION :

A FC air relay switch consists of a body and cover (normally of die cast aluminium / Grey CI / SS), a junction cylinder and the pressure capsule. The pressure in the pressure capsule is converted to a force which is balanced by a spring in the junction cylinder. When the force generated by pressure exceeds / falls above / below the spring force, a micro mechanical valve housed in the enclosure is actuated by a transfer rod.

M5 push-in straight fittings are provided to supply and output of air/gas.

PRINCIPLE OF OPERATION

Air relay switches are used where pneumatic logic is required e.g. in extremely hazardous areas. The output is an air supply (or an absence of it), in place of an electrical signal as in pressure switches. The input is air or inert gas (1.5bar to 7 bar pressure).

The process pressure is sensed by the pressure capsule of the pressure switch. Depending on the setpoint and the pneumatic valve logic chosen, a lever operates a pneumatic valve closing / opening it.

MOUNTING : (Fig. 1)

The Air Relay pressure switches can be mounted in any direction. It is advised to mount them in such a way that the diaphragm is vertical.

- 1) Connect the process pressure tubing to the pressure port. The pressure port size is generally 1/4" B.S.P. female, unless specially ordered otherwise. Other sizes can be obtained via adaptors.

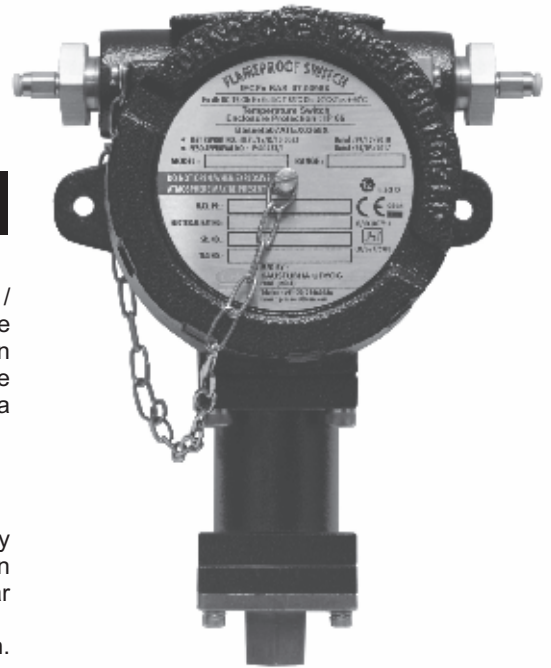


Fig. 1

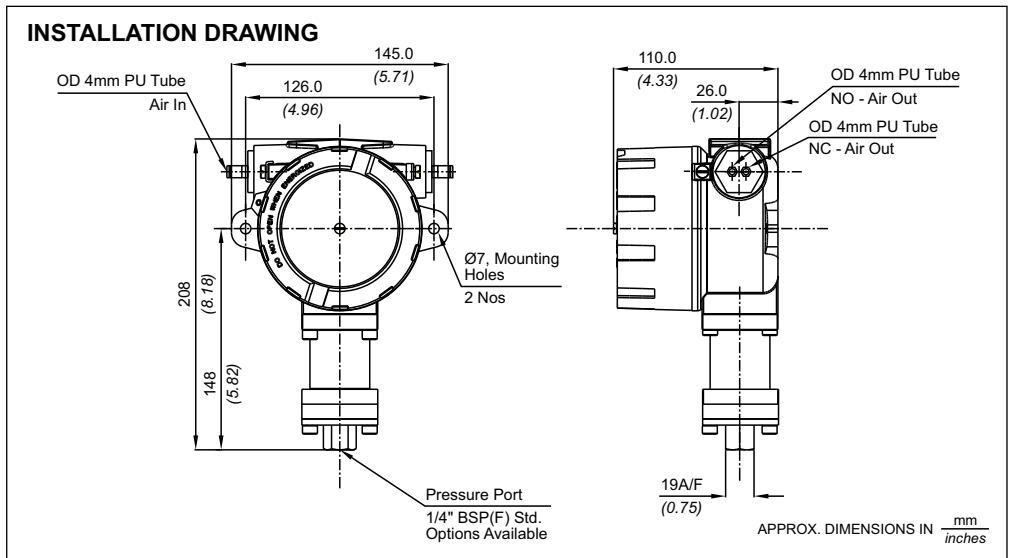
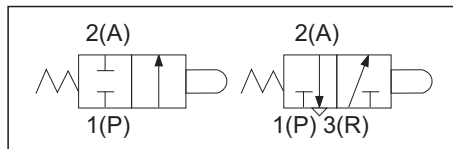


Fig. 2

PNEUMATIC VALVE SPECIFICATIONS

NO valve (P2) = air flows when process pressure < set point
NC valve (P1) = air flows when process pressure > set point
Supply pressure of air/inert gas = 1.5 to 7 bar max



Certificate No.: FM72815



Kaustubha Udyog (Orion Instruments)

S. No. 36/1/1, Sinhgad Road, Vadgaon Khurd, Pune 411 041 INDIA
Tel.: +91-(0) 20-24393877
Telefax : +91-(0) 20-24393577 / 25460486
Email : ku.pressure@gmail.com

Website : www.orion-instruments.io

BULLETIN NO. : KA250308

Fig. 3

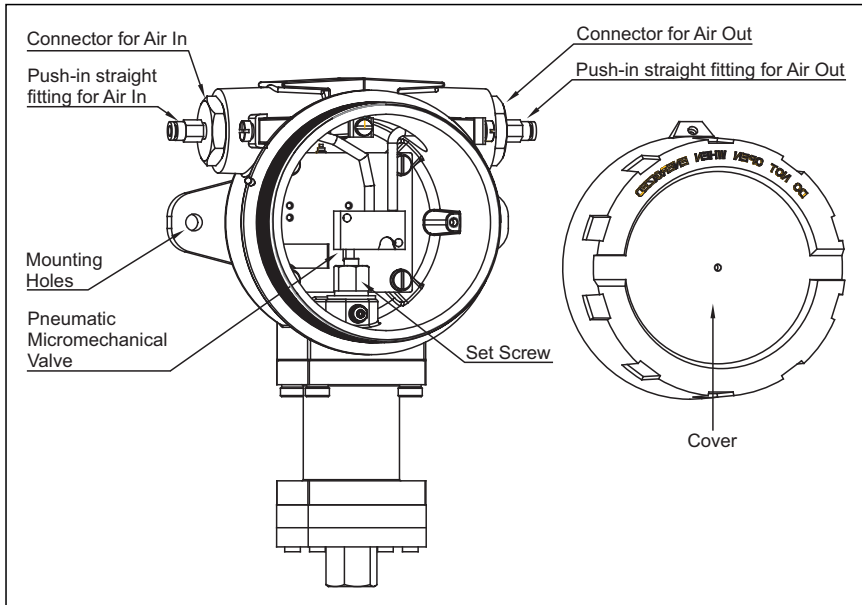
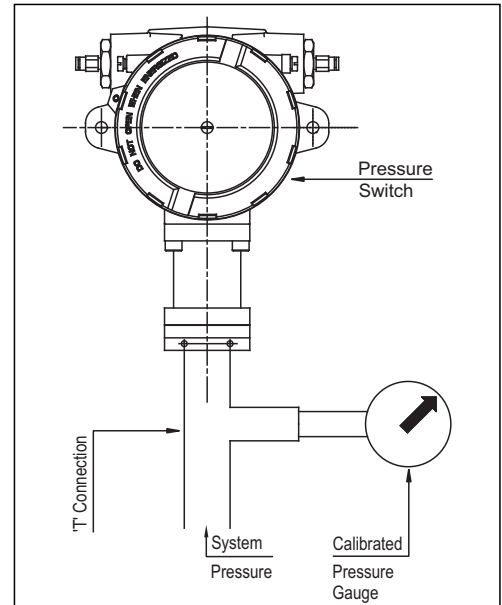


Fig. 4



SET POINT ADJUSTMENT FOR FC MODELS

(Fig. 3)

- 1) Remove the setscrew cover.
- 2) i) FC UNCALIBRATED Models : Turn the setscrew to the extreme negative end.
ii) FC CALIBRATED Models : Adjust the desired setpoint on the scale.
- 3) Apply the desired cutin (lower) / cutout (higher) pressure to the air relay switch.
- 4) i) FC UNCALIBRATED Models : Increase the pressure setting by turning the set screw till contacts changeover.
ii) FC CALIBRATED Models : proceed to Step 5
- 5) Some minor adjustment will be required to achieve the exact cutin (lower) / cutout (higher) point, which can be checked with the help of a proper pressure measurement device.
- 6) Reassemble the Cover having internal threading onto the Casing having external threading (M100 x 2). Secure the Cover firmly to the Casing by tightening it MANUALLY and applying normal force. Do not overtighten by using any tightening device which can cause damage to the threads.

Tip : The air relay switches are factory set at half the setpoint range (unless otherwise specified in a Purchase Order). Step 2 can be omitted if the desired set point is more than the factory setting for FC uncalibrated models.

TROUBLE SHOOTING TIPS

Generally no problems are observed if the air relay switch selection and the setpoint is proper. For a switch selection procedure, please consult our sales office.

For properly selected air relay switches, if following symptoms are observed, the likely causes and remedies are as stated below.

Symptom 1: Switch does not operate

- 1) Pressure does not reach the pressure port.
 - a) Check if the entry to the pressure capsule is not blocked by frozen process or scales or impurities in the process.
 - i) If this is the case, try freeing the blocked path by a blunt tool in case of scales or impurities.
 - ii) For frozen process, it is advisable to use chemical seals.

DO NOT OPEN THE PRESSURE CAPSULE IN ANY EVENT.

If the cause is none of the above mentioned probabilities, proceed as per the following steps.

- b) Check the system pressure & set point of switch. For use of switch for falling setpoints, system pressure has to be greater than cutout point. For use of switch for rising setpoints, the system pressure may not be reaching / exceeding the cutout point.
 - i) For adjustable differential models turn the differential screw to the extreme negative end.
 - ii) Use 'T' connection & connect calibrated pressure gauge to the 'T' connection as shown in the figure 4.
 - iii) Adjust the setpoint such that the system pressure is greater than the cut-out point of the pressure switch.
 - iv) If the switch still does not operate, remove the switch physically and should be returned to the factory.

Symptom 2: Leakage

In case leakage is observed, the pressure switch has to be returned to the factory without opening the pressure capsule. Check for the following likely causes and use a new switch taking proper precautions.

- a) System pressure is greater than working pressure : Use an overrange protector or a switch with appropriate maximum working pressure.
- b) Incompatible wetted parts : The working medium may not be compatible with wetted parts, which damages the sealing of the process from working parts. Use a chemical seal for the pressure switch or use proper compatible wetted parts.
- c) Excessive process temperature : Process temperature may exceed maximum allowable temperature, which in turn damages the diaphragms. Use an impulse tubing of proper length for cooling the process temperature. There may be a pressure drop depending on length of the impulse tube used. Adjust the setpoint of the pressure switch accordingly.

Symptom 3: Chattering

- 1) Check the system pressure for surges. Chattering is observed where the system pressure is close to the cutin / cutout point and the surge pressure exceeds the on-off differential. Use a pressure switch with an adjustable differential or use surge dampers in your system.

Symptom 4 : Air leakage from the valve

- 1) The opening of the pneumatic valve is gradual. So the air output pressure will gradually increase / decrease with increase / decrease in process pressure. This is normal. ■

IS/IES 60079-1



CM/L - 0007775906

For details of BIS certification,
please visit www.bis.gov.in